

South Park Shopping Center

2048 Martin Street South, Pell City, AL 35128

PHASE II: 1,500 SF END CAP/DRIVE THRU W/ GREASE TRAP

“South Park Shopping Center”: Located just off Hwy 231 in Pell City, AL. GLA approximately 55,400 SF and is anchored by Publix Supermarket.

Anchor Tenant: Publix—45,600 SF

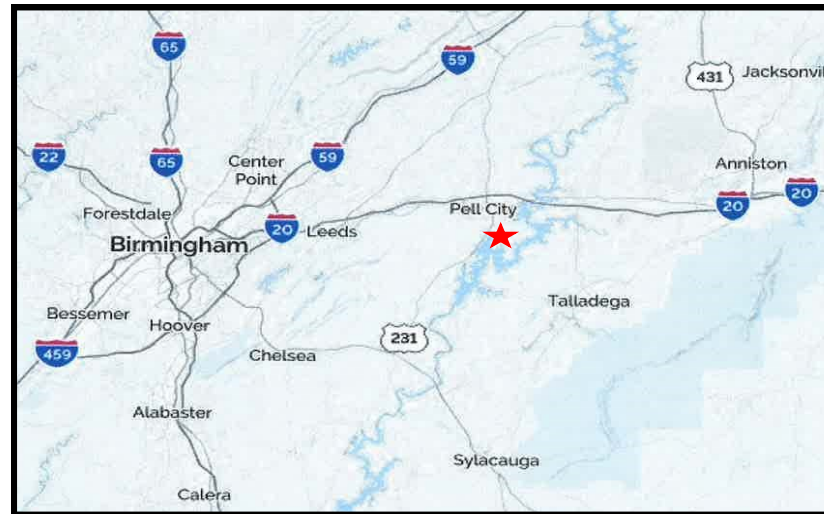
Current Tenants 1st Phase:

Great Clips, Aultman Dental, Bamawear, Nail Boutique & Spa, World Acceptance Corp and Pell City Internal Medicine.

- **PHASE II: 1,500 SF END CAP WITH DRIVE THRU/GREASE TRAP AVAILABLE**
- **FORMALLY PLANET NUTRITION**

BASERATE: \$19.00 PSF

NNN: EST @ \$2.50 per sf

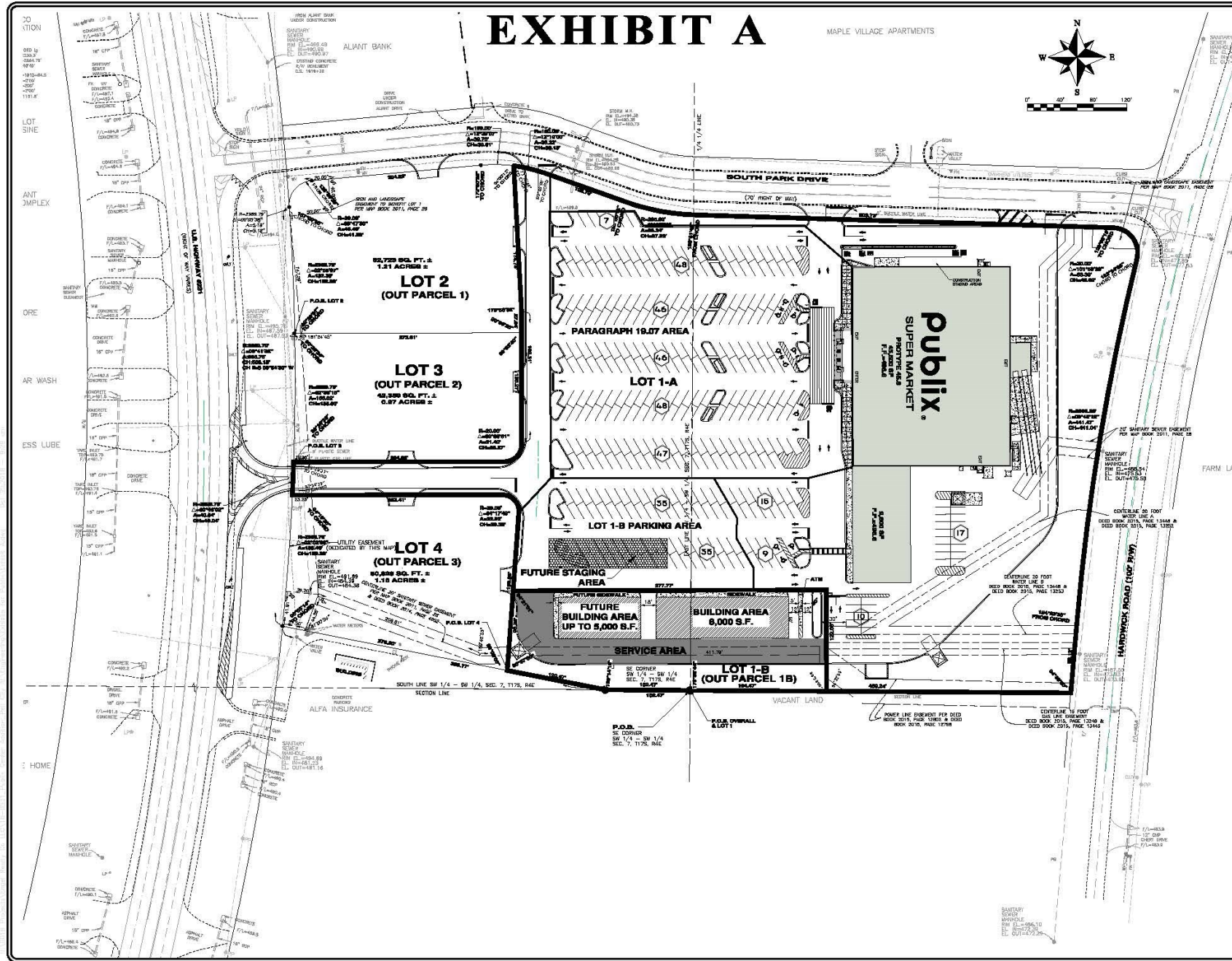
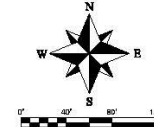


Dan Anderson
(205) 939-8239 Direct
danderson@engelrealty.com
www.engelrealty.com

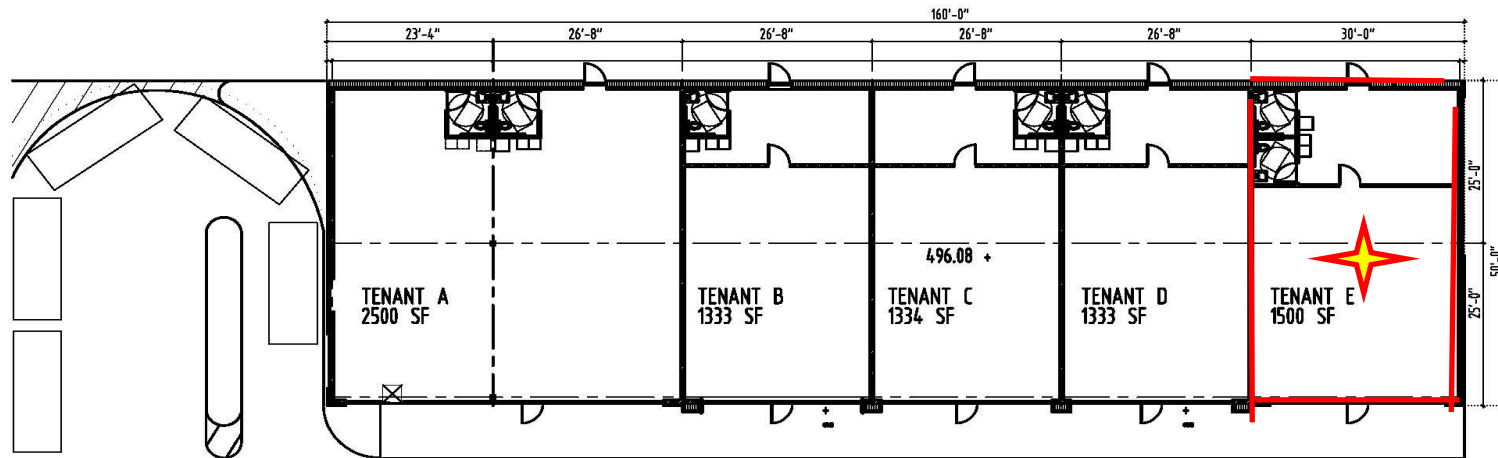


EXHIBIT A

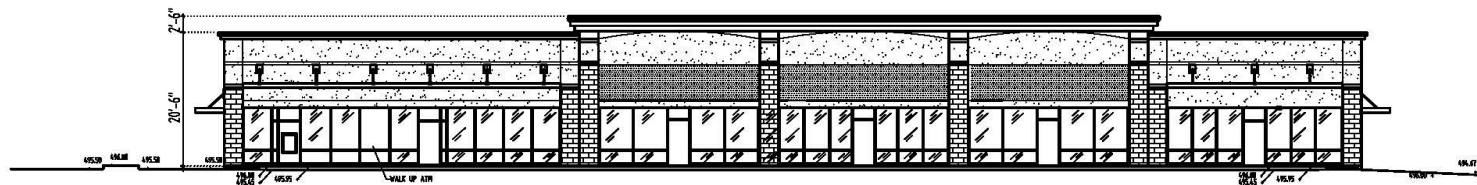
MAPLE VILLAGE APARTMENTS



SITE PLAN Public Center 231 South St. 231 South St. LLC 231 South St. LLC	
PREPARED BY: GONZALEZ, STRENGTH & ASSOCIATES, INC. CIVIL ENGINEERING, LAND SURVEYING, PLANNING, TRAFFIC & TRANSPORTATION 1400 N. W. 10th St., Suite 100 Fort Lauderdale, FL 33304 Phone: (954) 561-1111 Fax: (954) 561-1112 Email: info@gsa-inc.com	
DATE: 08/28/2014	
PROJECT NO.: 231S	



FLOOR PLAN $\frac{3}{8}$ " = 1'-0"



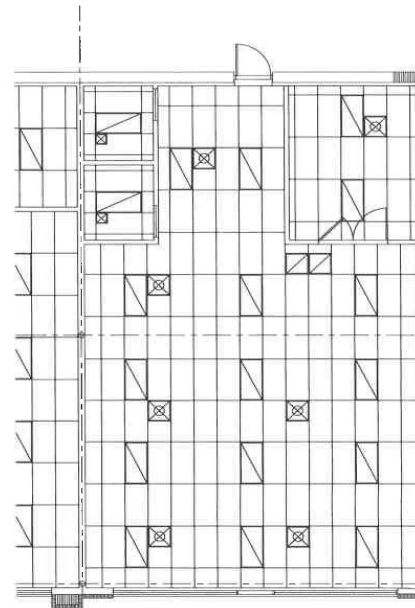
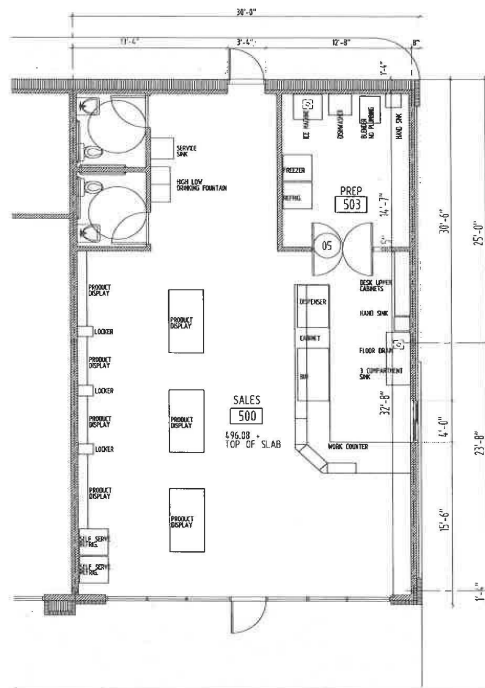
FRONT ELEVATION $\frac{3}{8}$ " = 1'-0"

SOUTH PARK CENTER ADDITION

ENGEL REALTY COMPANY, LLC 951 18TH STREET SOUTH, SUITE 200, BIRMINGHAM, AL 35205

DAN ANDERSON EXECUTIVE VICE PRESIDENT/PRINCIPAL

t. 205 939-8239 m. 205 915-2731 f. 205 939-6817 email: dananderson@engelrealty.com



FLOOR PLAN AND REFLECTED CEILING PLAN

1
NO SCALE A1



Architect's Seal
and Valid License Number

Engineer's Seal

SITE AND VISUAL IMPROVEMENT
PLANET NUTRITION
PUBLICLY SHOPPING CENTER
PARK CITY, TX

100' Scale: 1" = 100'-0" (1" = 100'-0")
100' Scale: 1" = 100'-0" (1" = 100'-0")

Notes:
1. See General Notes for details.

Date:
JUNE 19, 2019

Project:
201609.2

Drawn by:
MFB

Checked by:
MFB

**1,500 SF
END CAP
DRIVE THRU**





Current shop Tenant's in Phase I