

FOR LEASE

Meadow Lake Business Park

4000 Meadow Lake Drive, Hoover, AL 35242

Space for Lease

3000-4000 Meadow Lake Drive
Hoover, AL 35242

Property Info

Space Available: 3,561 SF

Total GLA:

Approximately 34,661 SF

Rental Rate:

Base Rate: \$16.00 PER SF

NNN: Cam, Tax & Ins (\$4.15 psf)
(Water & Dumpster in Cam)

Special Notes: * Located in Shelby County,
City of Hoover, No Occupational Tax

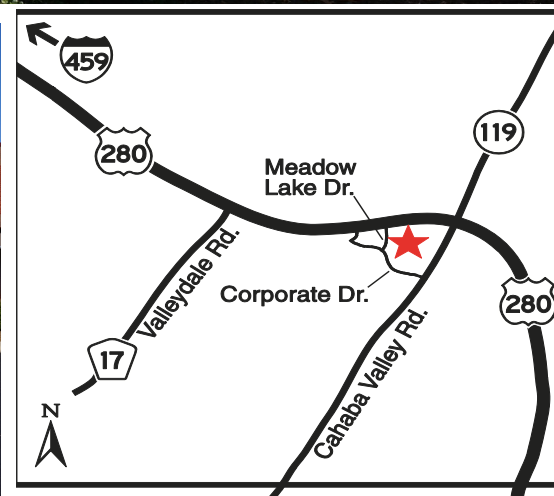
CONTACT:

Dan Anderson

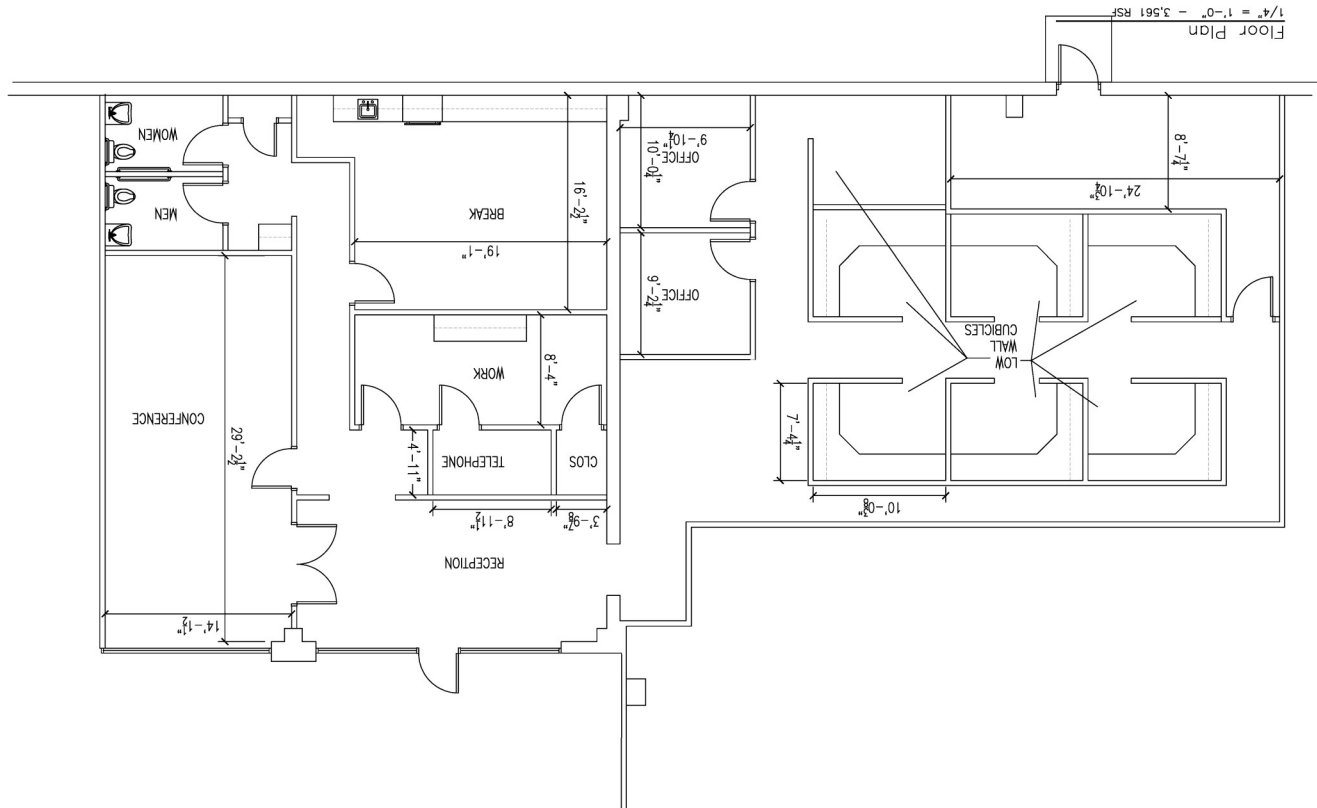
(205) 939-8239 Direct

danderson@engelrealty.com

www.engelrealty.com



3,561 SF



Space 15 & 16 on site plan





LEGEND

1. Rheumatology Center
2. BJ's Computer
3. All State
4. G&B Enterprises
5. Massage Therapy
6. Barber Shop
7. Hearing Solutions
8. Torque Performance
9. Golden City Rest
10. ICS
11. Nationwide Ins
12. Edward Jones Fin
13. Wood Engineering
14. Estes Chiropractic
15. 16-(Vacant-3,561 sf)
17. Palmetto Infusion

MEADOW LAKE BUSINESS PARK

BUILDING "B" - 16,318 S. F

BUILDING "A" - 18,346 S. F

HIGHWAY 280 SOUTH

MEADOW LAKE DRIVE

AREA SUMMARY

BUILDING "A" - 18,346 SF
 BUILDING "B" - 16,318 SF
 TOTAL AREA 34,664 SF

PARKING SPACES - 162
 HC PARKING SPACES 6
 TOTAL PARKING SPACES 168
 CALCULATED @ 5 PARKING
 SPACES PER 1,000 SF

